



Millburn School & Community Garden



Grow Our Garden 2013 – 2014 

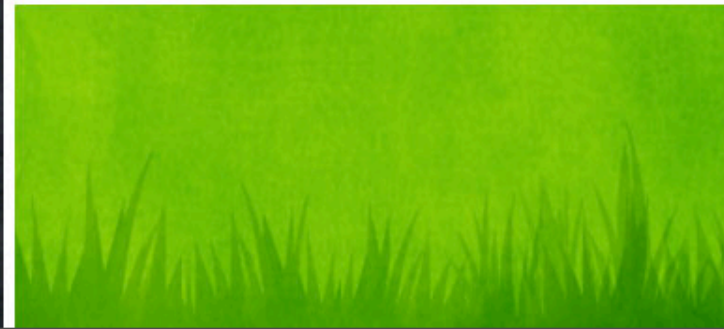
Millburn School & Community Garden

Mission & Objectives



Mission

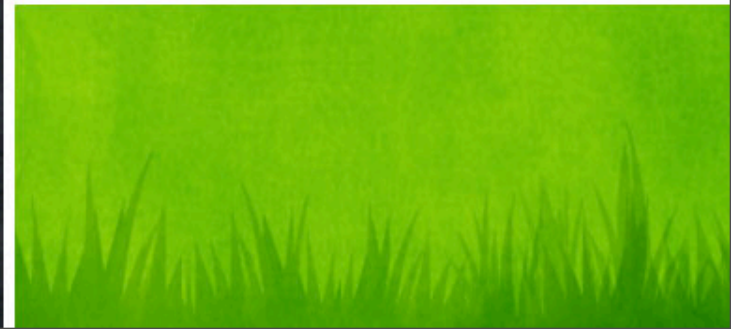
Millburn School and Community Garden is a place where students, staff, and communities gather to create gardens that connect curriculum, grow opportunities for sharing, and foster enriching experiences.



History

Planning for a school garden began 15 + years ago with a vision from staff members for outdoor learning spaces using gardens.

“Menzer’s Acre” resulted from donations raised from March Madness. The current expanded garden titled “Millburn School and Community Garden” exists due to community donations, both monetary and in-kind.



Community Donors



Katz Plumbing
Country Gardens
Perrelli Landscaping



*Poul's Landscaping
& Nursery, Inc.*



Eagle Scouts

Jake Vellinga - class of 2011
Tom Peterson - class of 2011
Nick Halberg - class of 2011





Benefits of Garden Based Learning*

Students

- Increased nutrition and environmental awareness
- Higher learning achievements
- Increased life skills
- Develop a wide range of academic and social skills

*Based on research compiled by Cornell University



Benefits of Garden Based Learning



Quality of Learning

- Garden experiences foster ecological consciousness.
- Hands-on work promotes community values, such as friendship, cooperation, and communication.
- Provides a unique space to engage student interest both inside and outside the classroom.
- Effective and engaging way to integrate curriculum and meet learning standards.

The Facts:

Results of a 2013 Education Studies review showed a multitude of positive impacts on both direct and indirect academic outcomes.

Of the 40 studies assessing direct learning outcomes, **83% found positive effects.**

Science had the highest proportion of positive effects, followed by math and language arts.

Positive outcomes were often attributed to “direct, hands-on experiences that made classroom learning relevant.”

In regards to indirect academic outcomes, **80% of studies were positive**; social development surfaced most frequently and positively.

Lessons Completed in the Garden

2009 – 11

1. Summer School classes created and maintained a vegetable garden
2. Grant funded garden beds used by the Ecology Club
3. Worm bin compost used by students to enrich raised beds. The compost was a product of year-long 4th grade snacks

2012

1. Ecology club dialogued about and researched gardens for the master plan of Menzer's Acre
2. 4th and 5th grade recess students prepared parts of the garden for planting
3. Ecology club mentored younger Garden Club members

2013

1. Pioneer lesson unit included several 4th grade classes that tilled and planted a pumpkin patch
2. Early Childhood Summer School class took a tour highlighting the 5 senses
3. Three Sisters Garden planted for Fall. 4th grade lessons on companion plantings of Native Americans begun
4. 4th and 5th grades Social Studies, Science and Math Connection

Plans For Student Learning &

1. Fifth graders who planted pumpkins last year to return to study and harvest
2. EC, Kindergarten, 1st Grade to prepare soil, grow seedlings and plant Rainbow Garden to connect with literature unit
3. 2nd,3rd Grade: Sensory Garden used for science study
4. 4th Grade: Tempel Farms field trips for greenhouse propagation, neighborhood gardens, and Jr. Achievement-related project at annual plant sale
5. 5th Grade: 3 Sisters Garden connection to Native American unit, companion planting
6. Middle School: Victory Garden related to WW2 unit
7. Current and graduate student service hours opportunities



Funding Needs

Storage Shed – \$2,500

Need close proximity to school for classroom and community garden use.
-- Funded by commitment from PTO for Spring 2014 Construction

Phase 1 Landscaping – \$9,000

Till, grade, and prepare garden for sod pathway installation and easy access for differently abled students



Funding Needs

Phase 2 Landscaping – \$5,000
Install outdoor “classroom”, a brick and stone circle in the center of the garden with shade sails for instruction and reflection.

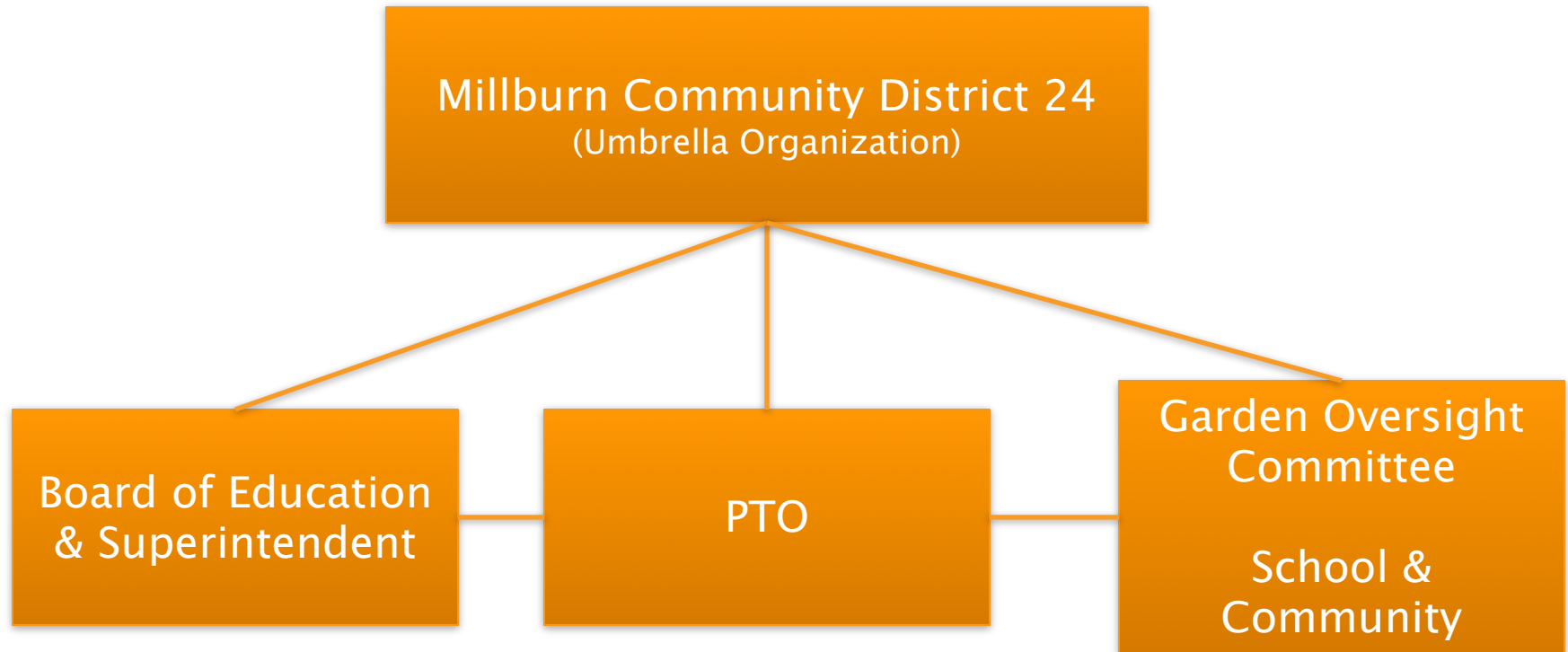
Other

1. Annual Tempel Farms Green House Project field trip
2. Middle School transportation for visits to garden for instruction and learning
3. General site and equipment maintenance and repair

Current & Future:

- Grant applications
- Sponsorships
- Plant sale
- Personalized brick sale to be used in “outdoor classroom” or entrance to garden
- Requests to Foundation, BOE, and PTO
- On-line fundraising partnering with website service, “Green Our Planet”

Garden Leadership Structure



Each group works in conjunction with each other for a united learning purpose for the community.